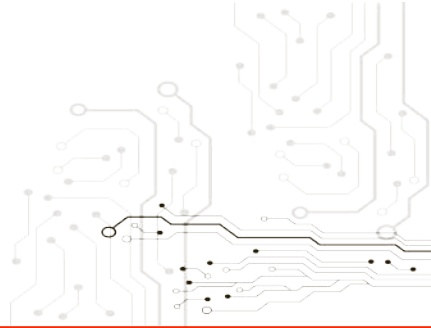




MUSCLE SERIES



IN-DASH SPEEDOMETER (90mm)

Installation Instructions

v20190528

Part No. SG31631 (white face)

Part No. SG31632 (black face)

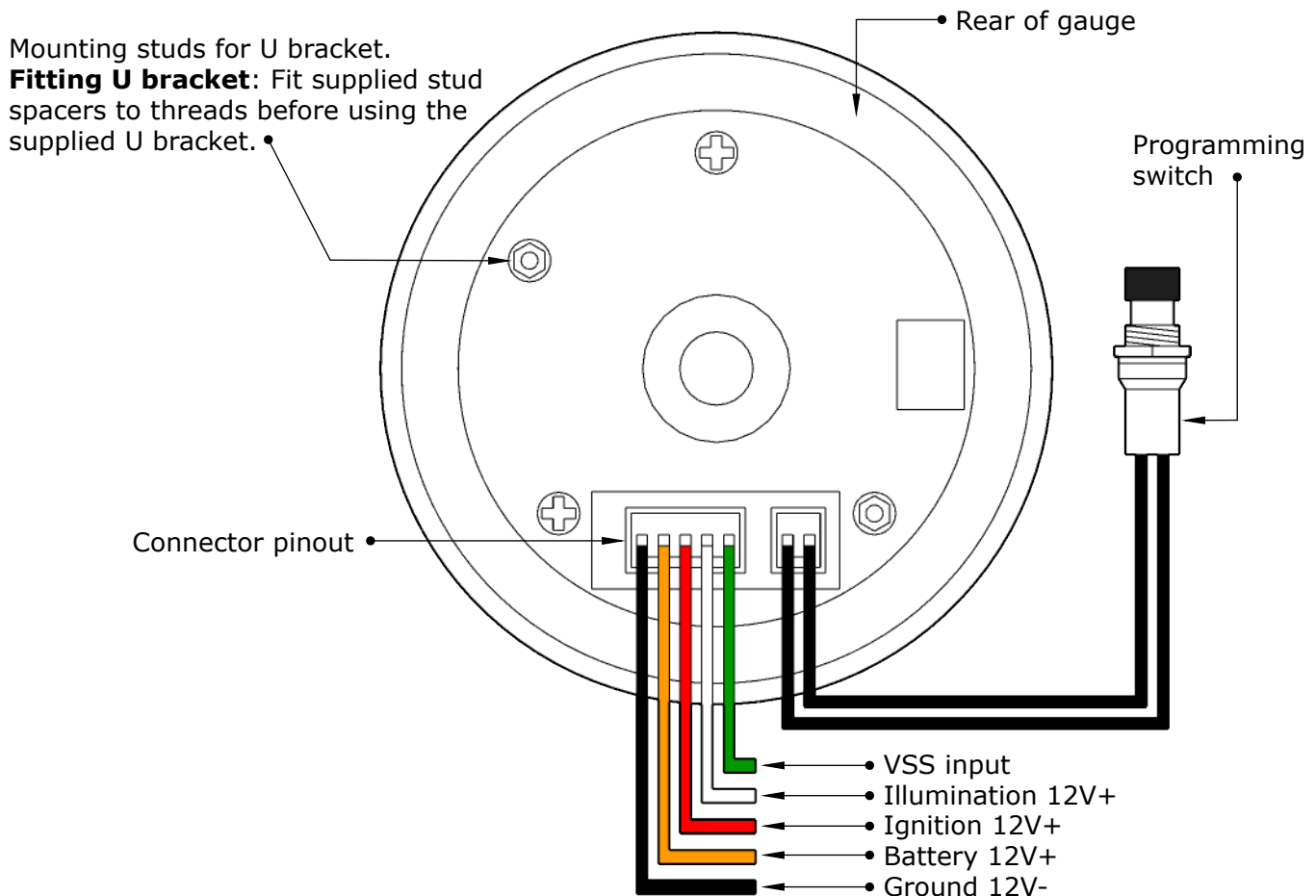
Important notes before installing:

- Installing this product to your vehicle may require an adaptor. SAAS make a large range of adaptors and installation parts, please check with your SAAS dealer for available adaptors.
- This product is designed for **12volt** systems **ONLY!**
- All installation work should be done by a qualified professional to avoid damage to this product.
- SAAS **RECOMMENDS** all products be tested prior to installation. This will save time and speed up the troubleshooting process if you encounter any issues.

Wiring Guide:

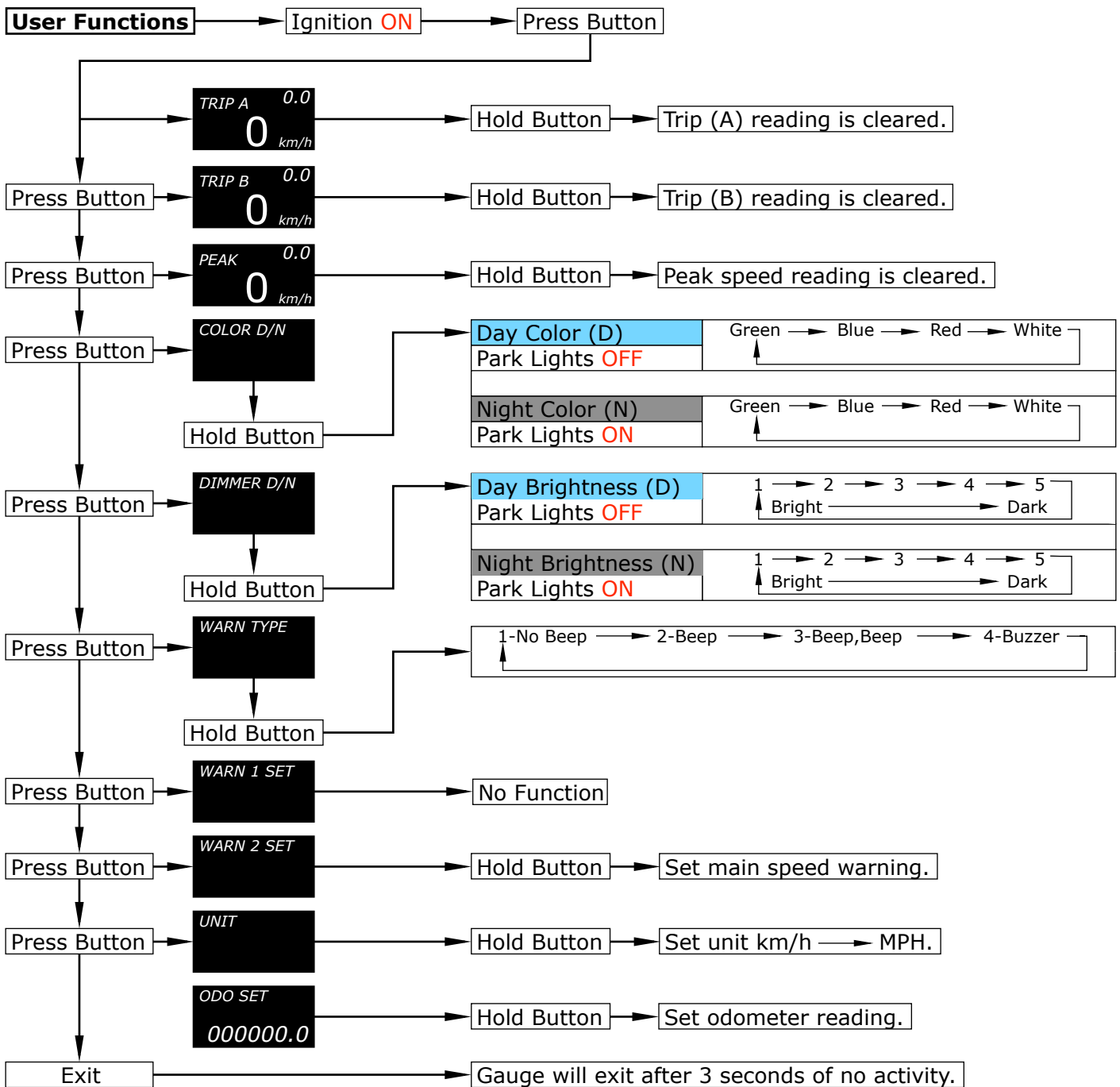
Wire colour	Wire Function	Wire Connection Location
Black	Ground 12V-	Vehicle body
Orange	Battery 12V+	Ignition harness / Fuse box
Red	Ignition 12V+	Ignition harness / Fuse box
White	Illumination 12V+	Park light circuit (do NOT connect to a dimmer)
Green	VSS input	Dash cluster/ gearbox / PCM Module

Wiring Diagram *Typical Layout*

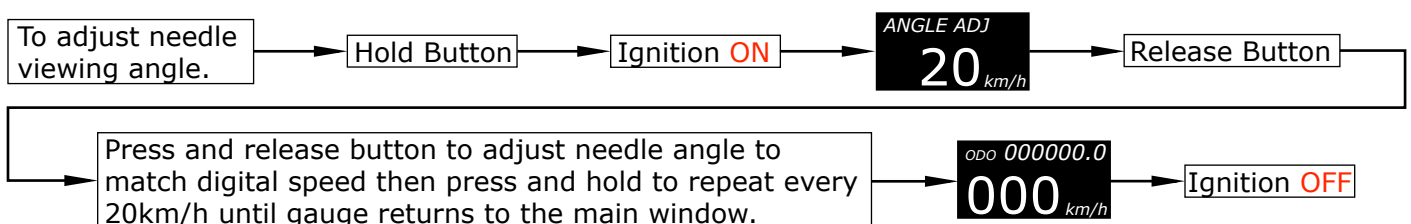


User Functions:

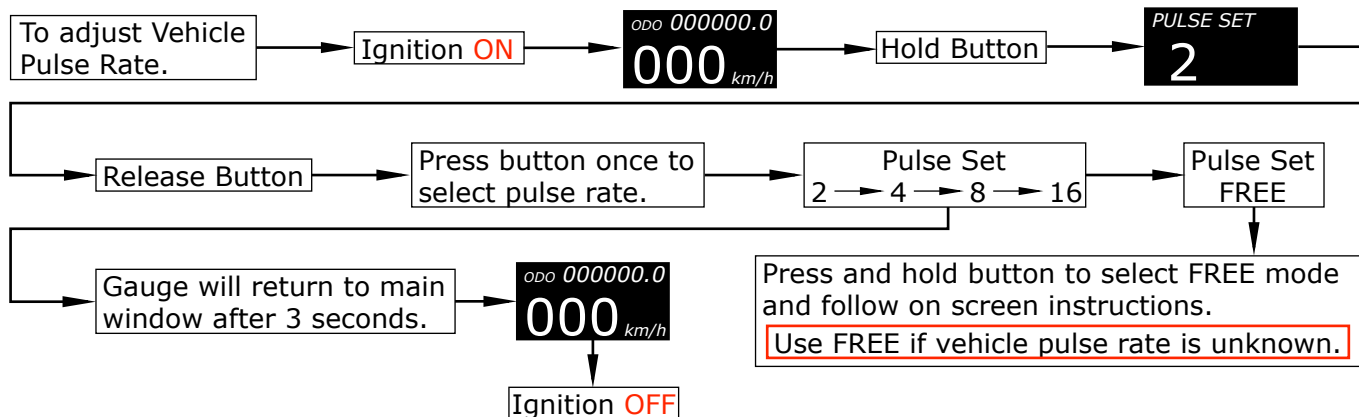
Note: The programming switch must be connected to the back of the gauge and mounted in a location that is easy to reach to access all functions.



Needle Viewing Angle Function:



Vehicle Pulse Rate Set Up:



Troubleshooting:

Please note: If you are having problems with the installation of this product, please do not contact your retailer or SAAS until you have read **ALL** the troubleshooting notes below.

Problem	Possible Cause	Solution
-gauge not reading	-bad connection on gauge	-test for power at the back of the gauge
-needle jumps around	-wrong pulse setting	-change pulse setting and retry
	-wrong VSS wire	-refer to vehicles workshop manual for correct wire
-gauge reading is out	-wrong pulse setting	-use free pulse setting if all other settings are out of range
-needle reading is not the same as digital	-gauge viewing angle	-use the angle adjust function to adjust needle
-no back lighting	-incorrect wiring	-refer to fitting instructions

- Additional troubleshooting notes:

Problem: "Free pulse setting used but speed reading is still out"

- If your speed reading is still out, instead of pressing the programming button at 60 KM/H, try pressing it at 58 KM/H or 62 KM/H. This method will help fine tune your speed reading but may not work on some vehicles.

WARNING! SAAS strongly recommends that you have help with this part of the setup!

GAUGE INFORMATION

Specifications

Gauge operating range	0 > 220 KM/H
Gauge operating voltage	8v > 18v
Speed unit type	KM/H > MPH
Recommended signal locations	Dash cluster, ECU VSS output, gearbox or ABS module
Programming switch cable length	1.1mt
Wiring harness length	2mt
Gauge lighting type	white OLED window with 4 colour LED backlight
Gauge lighting colours	blue > red > green > white
Gauge dimensions	88mm x 70mm
Mounting depth required for gauge	55mm (minimum)
Mounting hole size for gauge	80mm / 3 1/4"

For further assistance email: tech@saasautomotive.com.au

Contents:

In The Box	Qty	Notes	Part No.
Speedometer gauge	1		
Wiring connector	1		
Programming switch	1		
Mounting U bracket	1		
Mounting U bracket studs (M4x0.7 thread)	2		
Mounting U bracket nuts	2		
Fitting instructions	1		

Warranty Terms & Conditions:

SAAS Automotive Pty Ltd warrants this product against defects in factory workmanship and materials for a period of twelve (**12**) months from the date of original purchase. This warranty applies to the first retail purchaser, is non-transferable and covers only where the product has been subjected to normal use or service. Provision of this warranty shall not apply to any SAAS Automotive product that has been used for a purpose for which it is not designed, or which has been altered in any way that would be detrimental to the performance or life of the product, or misapplication, misuse, negligence or accident. Warranty claims to the manufacturer must be transportation prepaid and accompanied with dated proof of purchase. On any part or product found to be defective after examination by SAAS Automotive Pty Ltd, SAAS Automotive Pty Ltd will only repair or replace the merchandise through the original selling dealer or on a direct basis. SAAS Automotive Pty Ltd assumes no responsibility for diagnosis, removal and/or installation labour, loss of vehicle use, loss of time, inconvenience or any other consequential expenses. The warranties herein are in lieu of any other expressed or implied warranties, including any implied warranty of suitability, and any other obligation on the part of SAAS Automotive Pty Ltd, or the selling dealer.

For further assistance email: tech@saasautomotive.com.au



SINCE 1954

SAAS Automotive PTY LTD
25 Metrolink Circuit West, Campbellfield,
Victoria 3061 Australia

ABN: 48166279670
ACN: 166279670

Phone: +61 3 9930 0100
Fax: +61 3 8339 2270
Email: tech@saasautomotive.com.au
Web: www.shopsaas.com